

# DENTAL

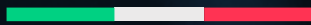


*Professional dental devices*



# 100% *MADE IN ITALY*

WE FOLLOW THE PRODUCTION PROCESS, FROM INITIAL CONCEPT TO THE FINAL PRODUCT, ENTIRELY IN OUR FACTORY.



## *IMPROVE QUALITY OF WORK IN MEDICAL FIELD.*

LED SpA strives to create products capable of improving the quality of the work for doctors, during their operations. Innovating and refining technologies in symbiosis with a functional design, to allow for maximum proficiency. Continuous research is done to achieve the highest possible objectives and we are always ready to collaborate, putting customers first and using all our experience to grow successful together.

*PERFORMANCE  
USABILITY  
DESIGN  
RELIABILITY*





# DENTAL

PROFESSIONAL DENTAL DEVICES



- 02** *SURTRON 50D*
- 04** *SURTRON 80D*
- 06** *SURTRON 80/120/160D*
- 08** *SURTRON TOUCH HP 50D*
- 10** *SURTRON LASER 8*
- 12** *X IMPLANT*
- 14** *Accesories*
- 24** *Trade Fairs*
- 27** *Contacts*

# SURTRON® 50D



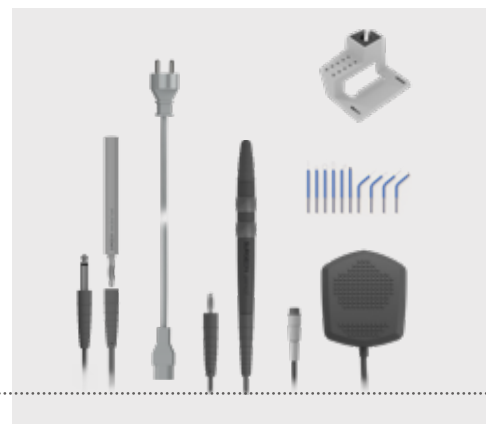
## STANDARD COMPOSITION:

- Reusable monopolar handle 00206.00
- Assorted electrodes (10 pcs) 00500.00
- Cable for rod neutral electrode 00404.02
- Rod neutral electrode 00403.01
- Footswitch 00304.00
- Power supply cable 2 mt 00100.03
- Electrodes and handle support 00202.00

SCAN HERE



READ MORE



**SURTRON® 50D** is a radiofrequency electro-surgical unit suitable for minor monopolar surgery.

**SURTRON® 50D** through the functions selection makes pure cut, cut coagulation (CUT 1 - CUT 2) and pure coagulation possible. The on-board microcontroller and digital display guarantees consistent safety and reliability under any conditions.

**SURTRON® 50D** offers outstanding professional surgical results due to its ergonomic and superior safety features.



## 50D

Reference code	10100.051
Maximum output power CUT	50 W - 400 Ω
Maximum output power CUT/COAG1	45 W - 400 Ω
Maximum output power CUT/COAG2	40 W - 400 Ω
Maximum output power COAG	40 W - 400 Ω
Working frequency	600 kHz
Patient circuit	F
Selectable input voltage	115/230 Vac
Mains frequency	50-60 Hz
Electrical input power	280 VA
Size WxHxD mm	190x85x239
Weight	2,5 kg

**SAFETY**  
 EN60601-1  
 EN60601-1-2  
 EN60601-2-2  
 Electrical Class: I CF  
 MDR 2017/745/UE Class: II b

**CONTROLS**  
 Output power monitoring  
 Self check control

# SURTRON<sup>®</sup> 80D



SCAN HERE



READ MORE

## STANDARD COMPOSITION:

- Reusable monopolar handle	00206.00
- Assorted electrodes (10 pcs)	00500.00
- Cable for neutral electrode	00404.08
- Steel neutral electrode	5365
- Footswitch	00304.00
- Power supply cable 2 mt	00100.03
- Electrodes and handle support	00202.00





**SURTRON® 80D** is a radiofrequency electrocautery unit suitable for minor monopolar surgery.

**SURTRON® 80D** has a multifunction selector which makes cutting (CUT), cut coagulation (BLEND), coagulation (COAG) and micro-coagulation (MICRO) possible. The one-board microcontroller and digital display guarantees consistent safety and reliability under any conditions.

**SURTRON® 80D** offers outstanding professional surgical results due to its ergonomic and superior safety features.

**SAFETY**  
 EN60601-1  
 EN60601-1-2  
 EN60601-2-2  
 Electrical Class: I CF  
 MDR 2017/745/UE Class: II b

**CONTROLS**  
 Patient/Plate circuit monitoring  
 Output power monitoring  
 Self check control

# 80D

Reference code	10100.081
Maximum output power CUT	80 W - 400 Ω
Maximum output power BLEND	60 W - 400 Ω
Maximum output power COAG	50 W - 400 Ω
Maximum output power MICRO	20 W - 600 Ω
Working frequency	700 kHz
Patient circuit	F
Selectable input voltage	115-230 Vac
Mains frequency	50-60 Hz
Electrical input power	280 VA
Size WxHxD mm	190x85x239
Weight	2,5 kg

# SURTRON<sup>®</sup> 80//120//160



**SURTRON<sup>®</sup> 80 / 120 / 160** is a high frequency electrocautery equipment which is suitable to light and medium surgery.

**SURTRON<sup>®</sup> 80 / 120 / 160**, through its performance, allows pure CUT, cut-coagulation BLEND, superficial coagulation FORCED COAG, deep coagulation in absence of necrosis SOFT COAG and, with a special adapter, BIPOLAR coagulation. The digital reading of delivered power and the monitoring of operative function by

microcontroller guarantees the absolute reliability of working conditions.

**SURTRON<sup>®</sup> 80 / 120 / 160** allows a highly professional surgery thanks to the user-

friendly and safety solutions normally used.

The connection of neutral electrode is constantly monitored. Safety control of patient/plate contact using split neutral electrode.

The possibility to control by the handle the monopolar output functions as well as the delivery of output power, allows to implement the surgical operation without turning away the surgeon attention from the surgical field.





	80	120	160
Reference code	10100.101	10100.201	10100.301
Maximum output power CUT	80 W-250 Ω	120 W-250 Ω	160 W-250 Ω
Maximum output power BLEND	60 W-200 Ω	90 W-200 Ω	120 W-200 Ω
Maximum output power FORCED COAG	50 W-150 Ω	80 W-150 Ω	100 W-150 Ω
Maximum output power SOFT COAG	40 W-100 Ω	60 W-100 Ω	80 W-100 Ω
Maximum output power BIPOLAR	30 W-100 Ω	40 W-100 Ω	60 W-100 Ω
Working frequency	600 kHz	600 KHz	600 KHz
Patient circuit	F	F	F
Selectable input voltage	115-230 Vac	115-230 Vac	115-230 Vac
Mains frequency	50-60 Hz	50-60 Hz	50-60 Hz
Electrical input power	230 VA	300 VA	350 VA
Size WxHxD mm	254x104x288	254x104x288	254x104x288
Weight	5 kg	5 kg	5 kg

SCAN HERE

READ MORE

SCAN HERE

READ MORE

SCAN HERE

READ MORE



**SAFETY**  
 EN60601-1  
 EN60601-1-2  
 EN60601-2-2  
 Electrical Class: I CF  
 MDR 2017/745/UE Class: II b

**CONTROLS**  
 Patient/Plate circuit monitoring  
 Output power monitoring  
 Self check control

Possibility of use for minimum invasive surgery  
 Possibility of use of bipolar forceps  
 Possibility of use of split neutral electrodes  
 Planning of the working conditions

Memorization of the last used settings  
 Activation of the monopolar power with footswitch and/or handle  
 Digital regulation and indication of the output power  
 Adjustment of the volume

## 80//120//160

STANDARD COMPOSITION:

- Reusable monopolar handle 00205.00
- Assorted electrodes (10 pcs) 00500.00
- Cable for rod neutral electrode 00404.08
- Rod neutral electrode 5365
- Footswitch 00304.00
- Power supply cable 2 mt 00100.03
- Electrodes and handle support 00202.00





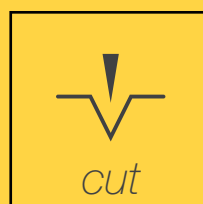
**SURTRON® TOUCH HP 50D** is a latest generation radiofrequency electrocautery unit suitable for monopolar microsurgery.

**SURTRON® TOUCH HP 50D** intuitive and easy to use, offers the possibility of selecting and saving various work programs using different functions of pure cut, cut coagulation and pure coagulation.

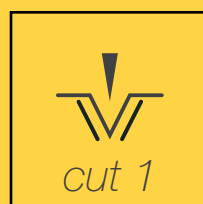
**SURTRON® TOUCH HP 50D** with its easy and intuitive touchscreen work management and its outstanding safety features offers superior professional surgical results.

## CUT

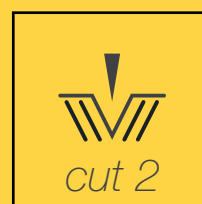
### MONOPOLAR



50 W-400 Ω



45 W-400 Ω



40 W-400 Ω

# SURTRON<sup>®</sup>

## TOUCH HP 50D

**SAFETY**  
 EN60601-1  
 EN60601-1-2  
 EN60601-2-2  
 Electrical Class: I CF  
 MDR 2017/745/UE Class: II b

**CONTROLS**  
 Patient/Plate circuit monitoring  
 Output power monitoring  
 Self check control

### STANDARD COMPOSITION:

- Reusable monopolar handle 00206.00
- Assorted electrodes (10 pcs) 00500.00
- Cable for rod neutral electrode 00404.02
- Rod neutral electrode 00403.01
- Footswitch 00304.00
- Power supply cable 2 mt 00100.03
- Electrodes and handle support 00202.00



## COAG

### MONOPOLAR



40 W-400  $\Omega$

#### Reference code

Maximum output power CUT	<b>10100.T05</b> 50 W - 400 $\Omega$
Maximum output power CUT/COAG1	45 W - 400 $\Omega$
Maximum output power CUT/COAG2	40 W - 400 $\Omega$
Maximum output power COAG	40 W - 400 $\Omega$
Working frequency	600 kHz
Patient circuit	F
Selectable input voltage	115/230 Vac
Mains frequency	50-60 Hz
Electrical input power	280 VA
Size WxHxD mm	215x125x230
Weight	1,4 kg

# SURTRON LASER 8

*Painless surgery with less bleeding*

Our minimally invasive **SURTRON LASER 8** is designed to offer advanced solutions in both minimally invasive surgery and tissue biostimulation.

For minimally invasive surgery, the laser offers an excellent alternative to traditional techniques, reducing damage to surrounding tissues and accelerating patient recovery times. Using a wavelength of 976 nm and a power of 8 W, the laser enables precise and controlled operations, guaranteeing optimal results with a minimum risk of complications.

In addition, tissue biostimulation is an important application of our device. This technique uses the laser to stimulate the body's natural healing processes, accelerating tissue regeneration and reducing post-operative pain and swelling. The laser emits light that is absorbed by the tissue, triggering a series of cellular reactions that promote healing and restoration of damaged tissue.

Thanks to our device's ability to deliver precise and controlled laser treatment, clinicians can benefit from improved surgical outcomes and faster recovery times for patients. The combination of minimally invasive surgery and tissue biostimulation makes our device a valuable resource for a wide range of medical procedures, improving the overall clinical outcome and well-being of patients.

Equipped with continuous or pulsed emission modes, the device can be used with different accessories, allowing the physician to choose the most suitable configuration for the specific treatment. Managed by a microprocessor, it offers a simple interface to select the desired parameters or use preset programs. Safety is ensured by a control system that automatically deactivates laser irradiation if the accessory is not connected. Laser activity is indicated by yellow lights on the sides of the device.

With a touchscreen display and an intuitive interface, the device offers simple and immediate use. Designed with advanced technology, it is a reliable resource for physicians engaged in minimally invasive surgery and tissue biostimulation.



## STANDARD COMPOSITION:

- |                                    |              |
|------------------------------------|--------------|
| - Surgical tip                     | LDCPC01      |
| - Biostimulation tip               | LDCPB01      |
| - Single footswitch                | 00304.00     |
| - Protection for footswitch        | 00304.PO     |
| - Power supply cable 2 m           | 00100.03     |
| - Laser operator goggles           | LDCEP01      |
| - Laser patient protection glasses | LDCEPP1      |
| - Interlock laser control kit      | LMBKRIC      |
| - Interlock laser control          | LMBKRIC_TEST |
| - 6 guides kit for Fiber optic     | LDCKITN      |

### Advantages

- User friendly
- Compact and portable design
- Optimal laser wavelength
- Optimal power
- Little or no pain and swelling.
- Minimal scar effect
- Safe
- Laser diode innovative technology





**Reference code**

Wavelength of Laser Emitter  
 Maximum Output Power  
 Laser Emitter Control Frequency  
 Wavelength of the aiming beam  
 Size WxHxD mm  
 Weight

**LDC001**

976 nm  
 8 W +- 10%  
 Continuous and pulsed from 1Hz to 30Hz  
 635 nm  
 230x130x230  
 1,5 kg



**BIOSTIMULATION TIP  
 SURGERY TIP**

SCAN HERE



READ MORE

# X IMPLANT

## DENTAL SANITIZER

SCAN HERE



READ MORE

The **X IMPLANT** attacks the biofilm that forms around dental implants, its purpose is to de-escalate the onset of “implant disease” which is also known as peri-implantitis.

Peri-implantitis manifests itself with an initial phase, called mucositis as well as a more advanced phase called peri-implantitis.

The bacteria that come into play in the determination of this pathology are the same ones that are responsible for periodontal disease. The mucositis involves peri-implantitis soft part rather than the bone component. The symptoms are manifested by inflammation of the gum tissue which causes pain and easy bleeding.

The treatment with **X IMPLANT** system aims to attack the biofilm that forms around the implant and implant-prosthetic structures. Referring to the study of Prof. Bill Costerton of the Biofilm Center of the University of Montana in 1994 where laboratory tests showed the decontaminant action of an electromagnetic field on the biofilm.

The “electric current” effect on the implant is exploited, with the implant itself crossed by a high-frequency electromagnetic wave that breaks the chemical and ionic bonds of the bacterial biofilm.

The effect acts on the biofilm without damaging the peri-implantitis structures (soft and hard tissues).





Reference code	SDR001
Maximum Output Power	20 W - 500 Ohm
Dispensing Frequency (Action/Pause)	3 / 2 s
Output Frequency (kHz)	625 +- 5%
Size WxHxD mm	230x130x230
Weight	2 kg

### STANDARD COMPOSITION:

- |                                   |          |
|-----------------------------------|----------|
| - Reusable X IMPLANT handle       | SDRMA01  |
| - Ball Electrode ø2 mm            | SDRPS2D  |
| - Ball Electrode Curved ø2 mm     | SDRPS2C  |
| - Electrode ø3mm                  | SDRPUI3  |
| - Electrode ø4mm                  | SDRPUI4  |
| - Electrode ø5mm                  | SDRPUI5  |
| - Cable for rod neutral electrode | SDRCN01  |
| - Rod neutral electrode           | SDREN01  |
| - Power supply cable 2 m          | 00100.03 |



### Advantages

- Easy to use
- Compact and portable design
- Safe
- Innovative Technology

### Four pre-set programs

- Prevention of mucositis - peri-implantitis to be applied at the end of professional dental hygienist maintenance
- Treatment of mucositis.
- Treatment of peri-implantitis.
- Treatment of peri-implantitis with the Toronto bridge technique.



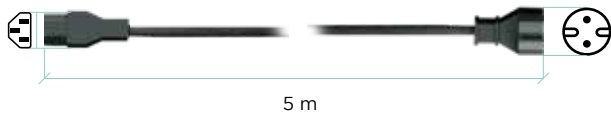
# ACCESSORIES

TECHNICAL INFORMATION // STANDARD COMPOSITION



Find your accessories on [store.led.it](http://store.led.it)

00100.01



**Description** Power supply cable SIE-IEC

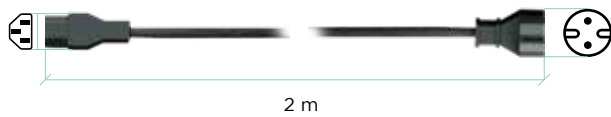
**Cable Length** 5 m (196,85 in)

- + SURTRON 50 D
- + SURTRON 80 D
- + SURTRON 80//120//160
- + SURTRON TOUCH HP 50 D
- + SURTRON LASER
- + X IMPLANT



pcs: 1

00100.03



**Description** Power supply cable SIE-IEC

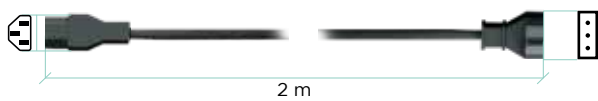
**Cable Length** 2 m (78,74 in)

- 1 SURTRON 50 D
- 1 SURTRON 80 D
- 1 SURTRON 80//120//160
- 1 SURTRON TOUCH HP 50 D
- 1 SURTRON LASER
- 1 X IMPLANT



pcs: 1

00100.00



**Description** Power supply cable IT-IEC

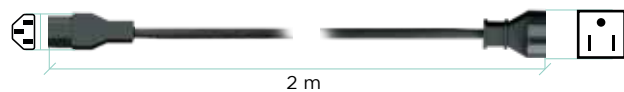
**Cable Length** 2 m (78,74 in)

- + SURTRON 50 D
- + SURTRON 80 D
- + SURTRON 80//120//160
- + SURTRON TOUCH HP 50 D
- + SURTRON LASER
- + X IMPLANT



pcs: 1

00100.04



**Description** Power supply cable USA-IEC

**Cable Length** 2 m (78,74 in)

- + SURTRON 50 D
- + SURTRON 80 D
- + SURTRON 80//120//160
- + SURTRON TOUCH HP 50 D
- + SURTRON LASER
- + X IMPLANT



pcs: 1

# DESCRIPTION OF SYMBOLS

## Compatibility:

+ = optional / x = not compatible / # = to verify / N = quantity Supplied





Autoclavable at 134°

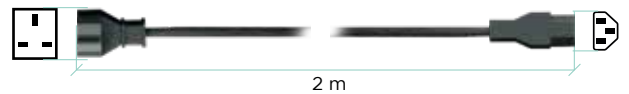


N Sterilization cycles numbers



<b>Description</b>	Power supply cable UK-IEC
<b>Cable Length</b>	2 m (196,85 in)
+ SURTRON 50 D	
+ SURTRON 80 D	
+ SURTRON 80//120//160	
+ SURTRON TOUCH HP 50 D	
+ SURTRON LASER	
+ X IMPLANT	

  pcs: 1

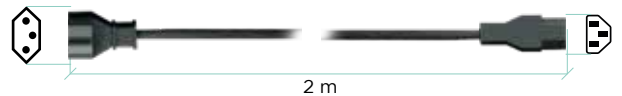
00100.05





<b>Description</b>	Power supply cable BR-IEC
<b>Cable Length</b>	2 m (196,85 in)
+ SURTRON 50 D	
+ SURTRON 80 D	
+ SURTRON 80//120//160	
+ SURTRON TOUCH HP 50 D	
+ SURTRON LASER	
+ X IMPLANT	

  pcs: 1

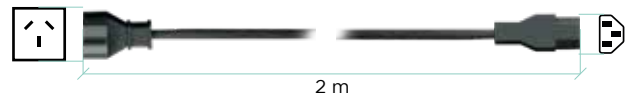
00100.07





<b>Description</b>	Power supply cable AU/CN-IEC
<b>Cable Length</b>	2 m (196,85 in)
+ SURTRON 50 D	
+ SURTRON 80 D	
+ SURTRON 80//120//160	
+ SURTRON TOUCH HP 50 D	
+ SURTRON LASER	
+ X IMPLANT	

  pcs: 1

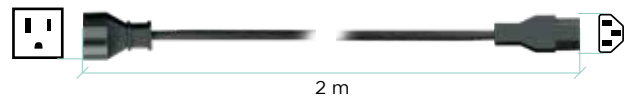
00100.09



<b>Description</b>	Power supply cable JP-IEC
<b>Cable Length</b>	2 m (196,85 in)
+ SURTRON 50 D	
+ SURTRON 80 D	
+ SURTRON 80//120//160	
+ SURTRON TOUCH HP 50 D	
+ SURTRON LASER	
+ X IMPLANT	

  pcs: 1

00100.10



## 00205.00



## 00206.00



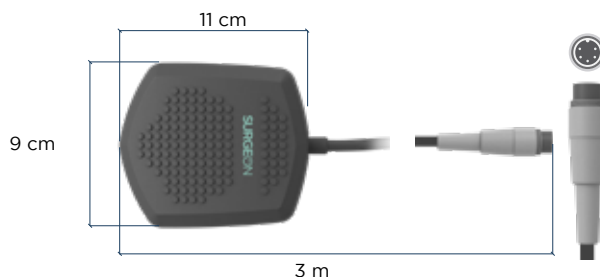
## SDRMA01



## 00304.00



## 00304.04



<b>Description</b>	Handpiece with switches
<b>Cable Length</b>	3 mt (118,11 in)
<b>Size</b>	18,5x1,6x1,7 cm (7,2x0,62x0,66 in)
<b>Weight</b>	0,03kg (0,06 lb)
<b>Sterilization</b>	Autoclavable
<b>Sterilization cycles</b>	100

- x SURTRON 50 D
- x SURTRON 80 D
- 1 SURTRON 80//120//160
- x SURTRON TOUCH HP 50 D
- x SURTRON LASER
- x X IMPLANT



pcs: 1

<b>Description</b>	Monopolar Handpiece
<b>Cable Length</b>	3 mt (118,11 in)
<b>Size</b>	18,5x1,6x1,7 cm (7,2x0,62x0,66 in)
<b>Weight</b>	0,03kg (0,06 lb)
<b>Sterilization</b>	Autoclavable
<b>Sterilization cycles</b>	100

- 1 SURTRON 50 D
- 1 SURTRON 80 D
- + SURTRON 80//120//160
- 1 SURTRON TOUCH HP 50 D
- x SURTRON LASER
- x X IMPLANT



pcs: 1

<b>Description</b>	X IMPLANT Handpiece
<b>Cable Length</b>	3 mt (118,11 in)
<b>Size</b>	18,5x1,6x1,7 cm (7,2x0,62x0,66 in)
<b>Weight</b>	0,03kg (0,06 lb)
<b>Sterilization</b>	Autoclavable
<b>Sterilization cycles</b>	100

- x SURTRON 50 D
- x SURTRON 80 D
- x SURTRON 80//120//160
- x SURTRON TOUCH HP 50 D
- x SURTRON LASER
- 1 X IMPLANT



pcs: 1

<b>Description</b>	Water-proof footswitch
<b>Cable Length</b>	2 m (78,75 in)
<b>Size</b>	11x3,5x9 cm (7,2x0,62x0,66 in)
<b>Weight</b>	0,3 kg (0,66 lb)

- 1 SURTRON 50 D
- 1 SURTRON 80 D
- 1 SURTRON 80//120//160
- 1 SURTRON TOUCH HP 50 D
- 1 SURTRON LASER
- x X IMPLANT



pcs: 1

<b>Description</b>	Water-proof footswitch
<b>Cable Length</b>	3 m (78,75 in)
<b>Size</b>	11x3,5x9 cm (7,2x0,62x0,66 in)
<b>Weight</b>	0,3 kg (0,66 lb)

- + SURTRON 50 D
- + SURTRON 80 D
- + SURTRON 80//120//160
- + SURTRON TOUCH HP 50 D
- + SURTRON LASER
- x X IMPLANT




pcs: 1

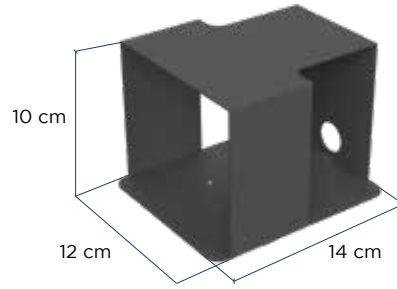
<b>Description</b>	Protection for single footswitch
<b>Cable Length</b>	NO
<b>Size</b>	12x10x14 cm (4,7x3,9x1,64 in)
<b>Weight</b>	0,65 kg (0,143 lb)

+ SURTRON 50 D
+ SURTRON 80 D
+ SURTRON 80//120//160
+ SURTRON TOUCH HP 50 D
1 SURTRON LASER
x X IMPLANT

 pcs: 1


00304.PO



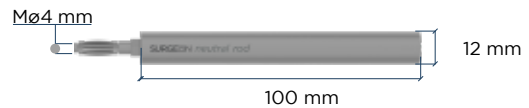
<b>Description</b>	Rod neutral electrode size 10xø1,2 cm
<b>Cable Length</b>	NO
<b>Size</b>	10x1,2x1,2 cm (3,934x0,47x0,47 in)
<b>Weight</b>	0,1 kg (0,22 lb)

1 SURTRON 50 D
x SURTRON 80 D
x SURTRON 80//120//160
1 SURTRON TOUCH HP 50 D
x SURTRON LASER
x X IMPLANT

 pcs: 1


00403.01



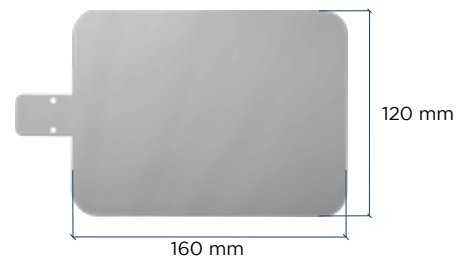
<b>Description</b>	Steel neutral electrode
<b>Cable Length</b>	NO
<b>Size</b>	16x12x0,02 cm (6,3x4,7x0,008 in)
<b>Weight</b>	0,1 kg (0,22 lb)
<b>Sterilization</b>	Autoclavable
<b>Sterilization cycles</b>	100

x SURTRON 50 D
1 SURTRON 80 D
1 SURTRON 80//120//160
x SURTRON TOUCH HP 50 D
x SURTRON LASER
x X IMPLANT

 pcs: 1


5365A



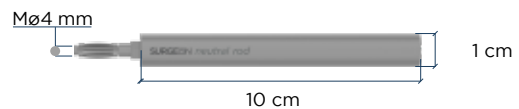
<b>Description</b>	Rod neutral electrode size 10xø1cm
<b>Cable Length</b>	NO
<b>Size</b>	10x1,2x1,2 cm (3,934x0,47x0,47 in)
<b>Weight</b>	0,1 kg (0,22 lb)

x SURTRON 50 D
x SURTRON 80 D
x SURTRON 80//120//160
x SURTRON TOUCH HP 50 D
x SURTRON LASER
1 X IMPLANT

 pcs: 1


SDREN01



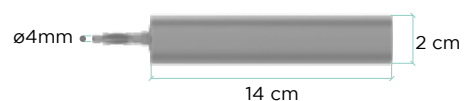
<b>Description</b>	Rod neutral electrode size 14xø2cm
<b>Cable Length</b>	NO
<b>Size</b>	14x2x2 cm (5,5x0,78x0,78 in)
<b>Weight</b>	0,4 Kg (0,88 lb)

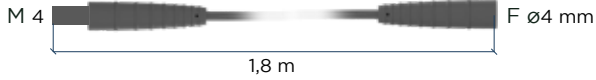
x SURTRON 50 D
x SURTRON 80 D
x SURTRON 80//120//160
x SURTRON TOUCH HP 50 D
x SURTRON LASER
+ X IMPLANT

 pcs: 1

SDREN02



## SDRNCN01



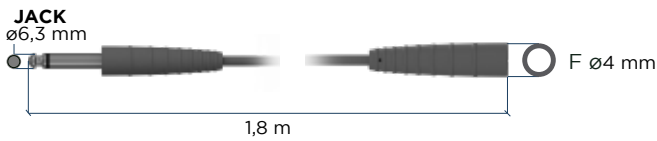
<b>Description</b>	Monopolar Cable M4-F4
<b>Weight</b>	0,06 kg (0,13 lb)
<b>Cable Length</b>	1,8 m (70,86 in)
<b>Sterilization</b>	Autoclavable
<b>Sterilization cycles</b>	100

- x SURTRON 50 D
- x SURTRON 80 D
- x SURTRON 80//120//160
- x SURTRON LASER
- x SURTRON TOUCH HP 50 D
- 1 X IMPLANT



pcs: 1

## 00404.02



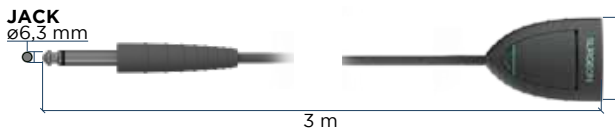
<b>Description</b>	Cable for rod neutral electrode
<b>Weight</b>	0,06 kg (0,13 lb)
<b>Cable Length</b>	1,8 mt (70 in)
<b>Sterilization</b>	NO
<b>Sterilization cycles</b>	NO

- 1 SURTRON 50 D
- x SURTRON 80 D
- + SURTRON 80//120//160
- 1 SURTRON TOUCH HP 50 D
- x SURTRON LASER
- x X IMPLANT



pcs: 1

## 00404.08\_S



<b>Description</b>	Cable for neutral electrode disposable type 5365/6429/FLEX
<b>Weight</b>	0,06 kg (0,13 lb)
<b>Cable Length</b>	3 m (118,11 in)
<b>Sterilization</b>	NO
<b>Sterilization cycles</b>	NO

- x SURTRON 50 D
- 1 SURTRON 80 D
- 1 SURTRON 80//120//160
- x SURTRON TOUCH HP 50 D
- x SURTRON LASER
- x X IMPLANT



pcs: 1

## LDCKITN




<b>Description</b>	Kit 6 guides kit for optical fiber
<b>LDCNA:</b>	Type A needle for LDCPC01
<b>LDCNB:</b>	Type B needle for LDCPC01
<b>LDCNC:</b>	Type C needle for LDCPC01
<b>LDCND:</b>	Type D needle for LDCPC01
<b>LDCNE:</b>	Type E needle for LDCPC01
<b>LDCNF:</b>	Type F needle for LDCPC01

- x SURTRON 50 D
- x SURTRON 80 D
- x SURTRON 80//120//160
- x SURTRON TOUCH HP 50 D
- 1 SURTRON LASER
- x X IMPLANT




pcs: 1

<b>Description</b>	Patient Contact Fibre Optic compatible for Type A to Type F guidance
<b>Sterillization</b>	Autoclavable
<b>Sterillization cycles</b>	300
<ul style="list-style-type: none"> <li>x SURTRON 50 D</li> <li>x SURTRON 80 D</li> <li>x SURTRON 80//120//160</li> <li>x SURTRON TOUCH HP 50 D</li> <li>1 SURTRON LASER</li> <li>x X IMPLANT</li> </ul>	 pcs: 1


## LDCF320



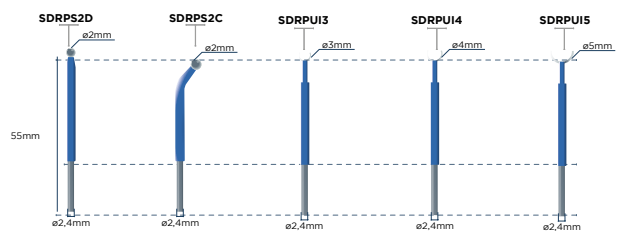
<b>Description</b>	Patient Contact Fibre Optic compatible for Type A to Type F guidance
<b>Sterillization</b>	Autoclavable
<b>Sterillization cycles</b>	300
<ul style="list-style-type: none"> <li>x SURTRON 50 D</li> <li>x SURTRON 80 D</li> <li>x SURTRON 80//120//160</li> <li>x SURTRON TOUCH HP 50 D</li> <li>1 SURTRON LASER</li> <li>x X IMPLANT</li> </ul>	 pcs: 1


## LDCF400



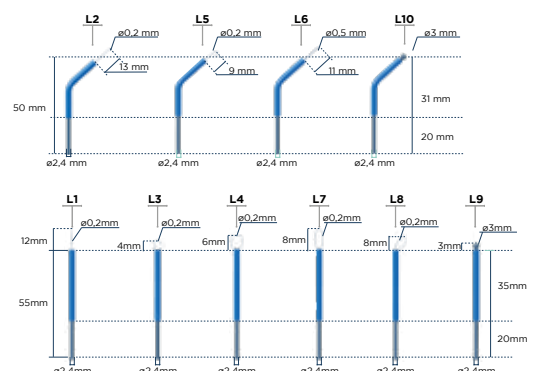
<b>Description</b>	Kit of assorted electrode length 5 cm (5pcs)
<b>SDRPS2D:</b>	Straight ball electrode ø2 mm
<b>SDRPS2C:</b>	Bent ball electrode ø2
<b>SDRPUI3:</b>	Dental sanificator tip ø3mm
<b>SDRPUI4:</b>	Dental sanificator tip ø4mm
<b>SDRPUI5:</b>	Dental sanificator tip ø5mm
<ul style="list-style-type: none"> <li>x SURTRON 50 D</li> <li>x SURTRON 80 D</li> <li>x SURTRON 80//120//160</li> <li>x SURTRON TOUCH HP 50 D</li> <li>x SURTRON LASER</li> <li>+ X IMPLANT</li> </ul>	 pcs: 1

## SDRKITP



<b>Description</b>	Kit of assorted electrode length 5 cm (10pcs)
<b>500500.L1:</b>	Straight thin wire electrode (5pcs)
<b>500500.L2:</b>	Bent thin wire electrode (5pcs)
<b>500500.L3:</b>	Loop electrode ø4 mm (5pcs)
<b>500500.L4:</b>	Loop electrode ø6 mm (5pcs)
<b>500500.L7:</b>	Drop electrode length (5pcs)
<b>500500.L8:</b>	Noose electrode length (5pcs)
<b>500500.L9:</b>	Straight ball electrode ø3 mm (5pcs)
<b>500500.L5:</b>	Drop electrode length (5pcs)
<b>500500.L6:</b>	Bent thick wire electrode (5pcs)
<b>500500.L10:</b>	Bent ball electrode ø3 mm (5pcs)
<ul style="list-style-type: none"> <li>1 SURTRON 50 D</li> <li>1 SURTRON 80 D</li> <li>1 SURTRON 80//120//160</li> <li>1 SURTRON TOUCH HP 50 D</li> <li>x SURTRON LASER</li> <li>x X IMPLANT</li> </ul>	 pcs: 1


## 00500.00



kit 00500.00: assorted pcs 10  
from 00500.L1 to 00500. L10


## LDCPT01



Description	Spacer between handpiece and patient
Cable Length	NO
Size	12,8x3,5cm (5,03x1,37 in)
Weight	60 g (0,13 lb)
Sterilization	NO
Sterilization cycles	NO
<ul style="list-style-type: none"> <li>x SURTRON 50 D</li> <li>x SURTRON 80 D</li> <li>x SURTRON 80//120//160</li> <li>x SURTRON TOUCH HP 50 D</li> <li>+ SURTRON LASER</li> <li>x X IMPLANT</li> </ul>	
 pcs: 1	


## LDCPC01



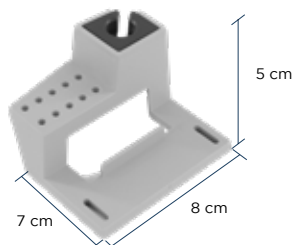
Description	Surgical tip
Cable Length	NO
Size	12,8x2,5cm (4,95x0,98 in)
Weight	60 g (0,13 lb)
Sterilization	NO
Sterilization cycles	NO
<ul style="list-style-type: none"> <li>x SURTRON 50 D</li> <li>x SURTRON 80 D</li> <li>x SURTRON 80//120//160</li> <li>x SURTRON TOUCH HP 50 D</li> <li>1 SURTRON LASER</li> <li>x X IMPLANT</li> </ul>	
 pcs: 1	


## LDCPB01



Description	Biostimulation tip
Cable Length	NO
Size	2x13 cm (0,78x5,1 in)
Weight	60 g (0,13 lb)
Sterilization	NO
Sterilization cycles	NO
<ul style="list-style-type: none"> <li>x SURTRON 50 D</li> <li>x SURTRON 80 D</li> <li>x SURTRON 80//120//160</li> <li>x SURTRON TOUCH HP 50 D</li> <li>1 SURTRON LASER</li> <li>x X IMPLANT</li> </ul>	
 pcs: 1	

## 00202.00




Description	Handpiece and electrode holder
Cable Length	NO
Size	8x5x7 cm (3,1x1,9x2,7 in)
Weight	0,02kg (0,04 lb)
Sterilization	NO
Sterilization cycles	NO
<ul style="list-style-type: none"> <li>1 SURTRON 50 D</li> <li>1 SURTRON 80 D</li> <li>1 SURTRON 80//120//160</li> <li>1 SURTRON TOUCH HP 50 D</li> <li>x SURTRON LASER</li> <li>x X IMPLANT</li> </ul>	
 pcs: 1	

<b>Description</b>	Operator laser protection
<b>Cable Length</b>	NO
<b>Size</b>	One Size
<b>Weight</b>	42,4 g (0,09 lb)
<b>Sterilization</b>	NO
<b>Sterilization cycles</b>	NO

x SURTRON 50 D
x SURTRON 80 D
x SURTRON 80//120//160
x SURTRON TOUCH HP 50 D
1 SURTRON LASER
x X IMPLANT

 pcs: 1


LDCEPO1



<b>Description</b>	Patient laser protection
<b>Cable Length</b>	NO
<b>Size</b>	One Size
<b>Weight</b>	21,4 g (0,04 lb)
<b>Sterilization</b>	NO
<b>Sterilization cycles</b>	NO

x SURTRON 50 D
x SURTRON 80 D
x SURTRON 80//120//160
x SURTRON TOUCH HP 50 D
1 SURTRON LASER
x X IMPLANT

 pcs: 4


LDCEPP1



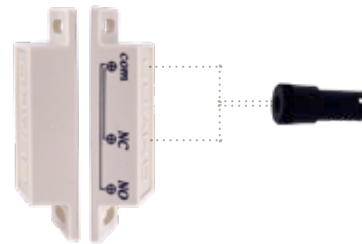
<b>Description</b>	Remote interlock connector kit for laser therapy unit
--------------------	---

x SURTRON 50 D
x SURTRON 80 D
x SURTRON 80//120//160
x SURTRON TOUCH HP 50 D
1 SURTRON LASER
x X IMPLANT

 pcs: 1


LMBKRIC



<b>Description</b>	Remote interlock connector for laser therapy unit
--------------------	---

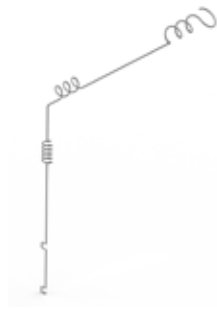
x SURTRON 50 D
x SURTRON 80 D
x SURTRON 80//120//160
x SURTRON TOUCH HP 50 D
1 SURTRON LASER
x X IMPLANT

 pcs: 1

LMBKRIC-TEST



## SDRSC01



<b>Description</b>	Cable holder
<b>Size</b>	50x30 cm (19,6x11,8 in)
<b>Weight</b>	35 g (0,07 lb)

- x SURTRON 50 D
- x SURTRON 80 D
- x SURTRON 80//120//160
- x SURTRON TOUCH HP 50 D
- x SURTRON LASER
- + X IMPLANT



pcs: 1

## SDRTRPC



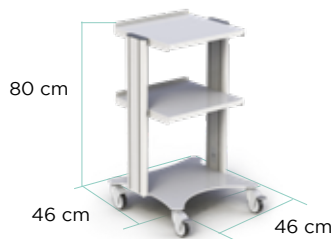
<b>Description</b>	Cable holder for trolley
<b>Size</b>	11x11 cm (4,33x4,33 in)
<b>Weight</b>	150 g (0,33 lb)

- x SURTRON 50 D
- x SURTRON 80 D
- x SURTRON 80//120//160
- x SURTRON TOUCH HP 50 D
- x SURTRON LASER
- + X IMPLANT



pcs: 1

## TRO03



<b>Description</b>	Trolley 3 shelves
<b>Size</b>	80x46x46 cm (31x18,1x18,1 in)
<b>Weight</b>	18 kg (34,47 lb)

- + SURTRON 50 D
- + SURTRON 80 D
- + SURTRON 80//120//160
- + SURTRON TOUCH HP 50 D
- + SURTRON LASER
- + X IMPLANT



pcs: 1

## TRO04



<b>Description</b>	Trolley 4 shelves
<b>Size</b>	90x46x46 cm (35,43x18,1x18,1 in)
<b>Weight</b>	20 kg (39,6 lb)

- + SURTRON 50 D
- + SURTRON 80 D
- + SURTRON 80//120//160
- + SURTRON TOUCH HP 50 D
- + SURTRON LASER
- + X IMPLANT



pcs: 1

## TRO05



<b>Description</b>	Trolley 5 shelves
<b>Size</b>	112x46x46 cm (44x18,1x18,1 in)
<b>Weight</b>	22 kg (41,9 lb)

- + SURTRON 50 D
- + SURTRON 80 D
- + SURTRON 80//120//160
- + SURTRON TOUCH HP 50 D
- + SURTRON LASER
- + X IMPLANT



pcs: 1

Discover your  
accessories on  
**store.led.it**



[store.led.it](https://store.led.it)



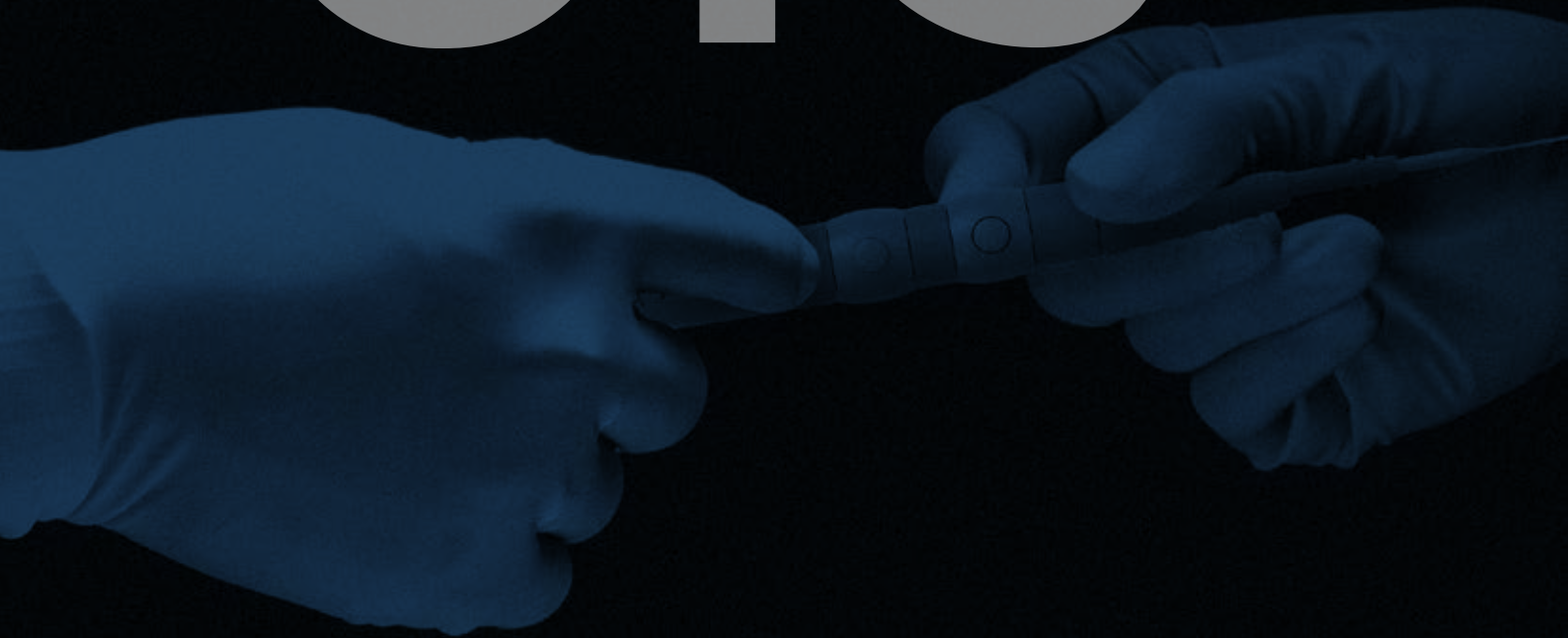
# EXHIBITION SECTION

# TRADE FAIRS 2025

*come and visit us*

 <p>MEDICAlliance</p>	 <p>MEDICA</p>	 <p>MEDICAL FAIR ASIA</p>
 <p>informa markets</p>	 <p>Arab Health By Informa Markets</p>	 <p>FIME By Informa Markets</p>
<p>In partnership with</p>  <p>ITALIAN TRADE AGENCY ICE - AGENZIA</p>	 <p>REEDC</p>	 <p>IDS</p>

# CON TACTS



# HOW TO REACH US



[www.led.it](http://www.led.it)  
[info@led.it](mailto:info@led.it)

*Manufacturing site*

**LED SpA**  
via Selciatella, 40  
04011 Aprilia (LT) Italy

**W** [led.it](http://led.it)  
**M** [info@led.it](mailto:info@led.it)  
**P** +39 06 92870045

*Legal site*

**LED SpA**  
via Marco Tullio Cicerone, 138  
03100 Frosinone (FR) Italy









ED 2024|11

SURTRON and LED logo are registered trademarks of LED SpA - Data, descriptions, dimensions, weight and illustrations are purely indicative. Manufacturer reserved the right to modify them without warning. BRDNT001c\_EN  
PRINTED IN ITALY - 2024 © LED SpA